

HDMI 2CH/5.1CH Audio Extractor

1.0 INTRODUCTION

This Extractor not only to meet the ideal image of the HDTV but also to meet the need of the enthusiasts' requirement for audio. Because it can extract the audio signal from the HDMI interface, then transmit audio to the Amplifier Receiver by SPDIF or Stereo.

1.1 FEATURES

This HDMI Audio Splitter has many features that enable it to perform in a superior manner. Among those features you will find:

- Supports audio output simultaneously: SPDIF and Stereo.
- Supports 2.0CH/5.1CH audio switch.
- Supports the highest video resolution to 1080p.
- Supports 225MHz/2.25Gbps per channel (6.75Gbps all channel) bandwidth.
- Supports 12bit per channel (36bit all channel) deep color.
- Supports HDCP.
- Supports uncompressed audio such as LPCM.
- Supports compressed audio such as DTS Digital, Dolby Digital.
- Support 3D all format, including 1080p@23.98/24Hz, 720p@59.94/60Hz/50Hz, bandwidth up to 225MHz.

2.0 SPECIFICATIONS

Inputs/Output Connector	
Input Connector	HDMI Female
Output Connector	HDMI Female, Toslink, Coaxial, 3.5mm Stereo
Operating Frequency	
Vertical Frequency Range	50/60Hz
Video Amplifier Bandwidth	2.25Gbps/225MHz
Resolutions(HDTV)	
Interlaced(50&60Hz)	480i,576i,1080i
Progressive(50&60Hz)	480p,576p,720p,1080p
Warranty	
Limited Warranty	1 Year Parts and Labor
Environmental	
Operating Temperature	0°C to +70°C
Operating Humidity	10% to 80 % RH (no condensation)
Storage Temperature	-10°C to +80°C
Storage Humidity	5% to 90 % RH (no condensation)
Power Requirement	
External Power Supply	5V DC @2A
Power Consumption (max)	2.5W

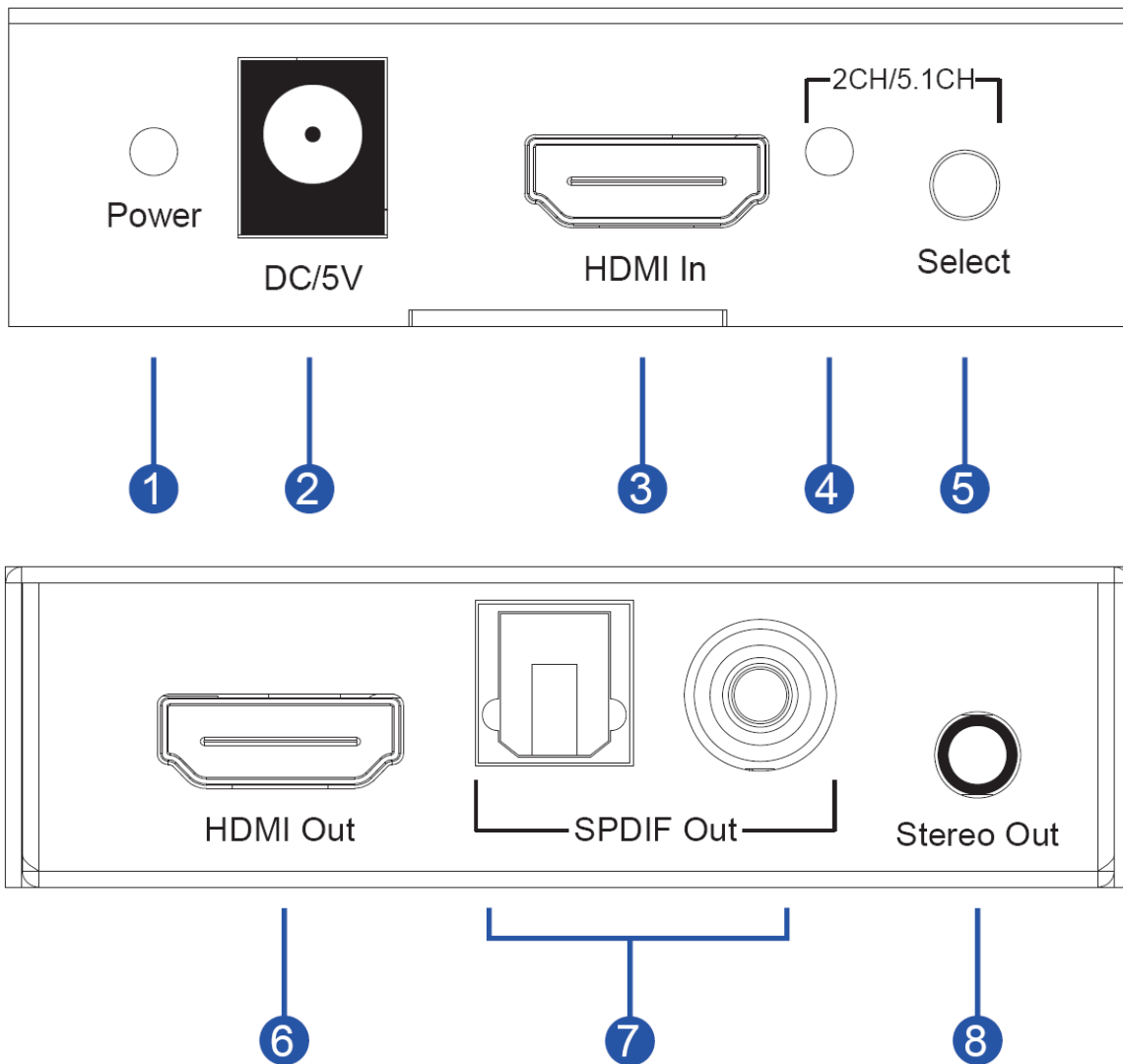
HDMI 2CH/5.1CH Audio Extractor

Regulatory Approvals	
Converter Unit	FCC,CE
Power Supply	UL,CE,FCC
Accessories Adapter	
AC Power Adapter	US standard, UK standard and so on
User Manual	1 x English

3.0 PACKAGE CONTENTS

- 1) Main unit.
- 2) 5V DC Power Supply.
- 3) User's Manual.

4.0 PANEL DESCRIPTIONS



HDMI 2CH/5.1CH Audio Extractor

1) Power and Active LED

With a double color LED when supplying power to this unit the light is red and when it starts to work normally the light is purple (red and blue mixed).

2) DC/5V

Connect this port to power adapter.

3) HDMI In

Connect this port to HDMI source device.

4) 2.0CH/5.1CH LED

When 2.0CH is being selected it is off and when 5.1CH is being selected it is on.

5) 2.0CH/5.1CH button

Pressing "button" to switch 2.0/5.1CH manually.

6) HDMI Out

Connect this port to HDMI Display.

7) SPDIF Out

Connect Toslink or Coaxial port to Amplifier Receiver.

8) Stereo Out

Connect this port to Amplifier Receiver.

HDMI Cable 
Audio Cable 



5.0 CONECTION DIAGRAM